



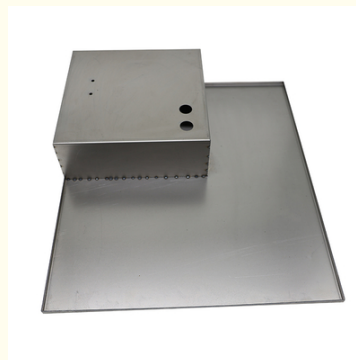
## Custom Sheet Metal Fabrication Service Stainless Steel Aluminum Parts

Our Product Introduction

for more products please visit us on [lathecnmachining.com](http://lathecnmachining.com)

### Basic Information

- Place of Origin: Guangdong, China
- Brand Name: Shenzhen Industrial-Man
- Certification: ISO9001:2015 IATF16949:2016
- Model Number: OEM Customized Metal Parts Machining
- Minimum Order Quantity: 1
- Price: Negotiable
- Packaging Details: As the requirement of customer
- Delivery Time: 7-15 work days
- Payment Terms: L/C, D/A, D/P, T/T, Western Union, MoneyGram
- Supply Ability: 100000Pcs/ Month

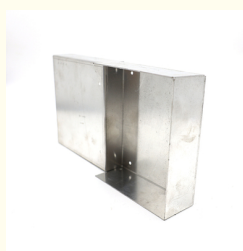
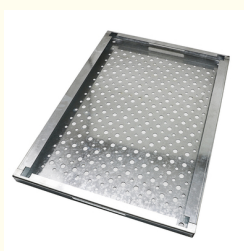


### Product Specification

- Tolerance: 0.01- +/-0.005mm
- Drawing Format: 2D/(PDF/CAD)3D(IGES/STEP)
- MOQ: 1 Piece
- Surface Treatment: Anodizing/Powder Coating/Brushing/Painting/Laser Etching
- Material Options: Aluminum Alloy, Brass Alloy, Stainless Steel Alloy, Steel Alloy, Plastic, Wood, Silicone, Rubber
- CNC Services: CNC Turning, CNC Milling, Drilling, Grinding, Spinning, Wire-EDM Cutting, Stamping, Laser Cutting, Bending, Die Casting, Extrusion, Injection Molding
- Testing Equipment: Digital Height Gauge, Caliper, Three Coordinate Measuring Machine, Projection Machine, Roughness Tester, Hardness



### More Images



### Product Description

ISO 9001 Certified Factory Direct Price Custom Sheet Metal Fabrication Service  
Stainless Steel Aluminum Sheet Metal Welding Part

Our

## Product Specifications

Attribute	Value
Tolerance	0.01- +/-0.005mm
Drawing Format	2D/(PDF/CAD)3D(IGES/STEP)
MOQ	1 Piece
OEM/ODM	OEM ODM CNC Drilling Milling Machining Service
Surface treatment	Anodizing/Powder Coating/Brushing/Painting/Laser etching

Experienced Factory with 21 Years of Experience

More Than 100 Engineers Professional Team

### Shenzhen Industrial Man Product RP&M Co., Ltd.



ODM & OEM  
Factory



Worldwide  
Service



DHL, FedEx  
International Delivering



Customized  
Service

**Main Business:** CNC Machining ( Metal / Plastic Material )  
 Silicone Molding ( Vacuum Casting )  
 3D Printing ( SLA / SLS / FDM )  
 Rapid Injection Tooling  
 Sheet Metal  
 1:1 Display Car Model Fabrication

Welcome Customers to Visit Our Factory

Experienced Factory with 21 Years of Experience

More Than 100 Engineers Professional Team

### Shenzhen Industrial Man Product RP&M Co., Ltd.



ODM & OEM  
Factory



Worldwide  
Service



DHL, FedEx  
International Delivering



Customized  
Service

**Main Business:** CNC Machining ( Metal / Plastic Material )  
 Silicone Molding ( Vacuum Casting )  
 3D Printing ( SLA / SLS / FDM )  
 Rapid Injection Tooling  
 Sheet Metal  
 1:1 Display Car Model Fabrication

Welcome Customers to Visit Our Factory

## Our Services

# STRONG CAPABILITY

One-Stop Service Manufacturer

## Aluminum Alloy Prototype Precision Parts



**More Than  
50000m<sup>2</sup>**  
Factory Area

**Over 100  
Million US Dollar**  
Annual Output

**More Than  
300 Sets**  
Precision Machining Equipment

CNC turning, CNC milling, Drilling, Grinding

Spinning, Wire-EDM Cutting, Stamping

Laser Cutting, Bending, Die Casting

Extrusion, Injection Molding

### Materials We Work With

Aluminum Alloy: 5052/6061/6063/7075 etc

Brass Alloy: 3602/2604/h59/h62/etc

Stainless Steel Alloy: 303/304/316/412/etc

Steel Alloy: Carbon/Die Steel/etc

Other Special Materials: Lucite/Nylon/Bakelite/etc

Plastic, Wood, Silicone, Rubber

Custom materials per customer requirements

### Surface Treatment Options

Anodizing, Sandblasting, Painting, Powder coating, Electroplating, Silk Printing, Brushing, Polishing, Laser Engraving

### Quality Assurance

ISO9001:2015, 16949, SGS certified

Fully Certified, Trustworthy, and Reassuring for Customers.



### Packaging & Delivery

Packaging options: Foam, Carton, Wooden boxes, or custom packaging per requirements

Delivery methods: DHL, FEDEX, UPS, TNT, EMS, SF or according to customer requirements



**Shenzhen Industrial Man Product RP&M Co., Ltd**



86 18028781979



sales@gyrmodel.com



lathecncmachining.com

DEFG, 19/F, Ruijun Bldg Zhongxin Road #108 XingliaoBaoan Area, Shenzhen City, China